

## Specification

Spirit GX		
Work Area		34 x 24 in. (860 x 610mm) Extendable to 38 x 24 in. (965 x 610 mm)
Max. Part Size (W x L x H)	All doors closed	40 x 24 x 7 in. (1016 x 610 x 177 mm)
	All doors open	40 x ∞ x 7 in. (1016 x ∞ x 177 mm)
Table Size		40.3 x 27.7 in. (1025 x 705 mm)
Dimensions		53.7 x 34.6 x 39.7 in. (1365 x 880 x 1010 mm)
Laser Source		30 to 100 Watt Sealed CO <sub>2</sub> Laser
Cooling		Air-cooled, Operating environment temperature 15°- 30° C (60° - 86° F)
Drive		Closed-loop DC Servo Control
Maximum Speed*		80 IPS
Throughput*		260.9 in <sup>2</sup> / hr (1683 cm <sup>2</sup> / hr)
Throughput* with SmartACT Enabled		322.1 in <sup>2</sup> / hr (2078 cm <sup>2</sup> / hr)
Speed Control		Adjustable from 0.1-100% (Up to 16 color-linked speed settings per job)
Power Control		Adjustable from 0-100% (Up to 16 color-linked power settings per job)
Distance Accuracy		0.254mm or 0.1% of move, whichever is greater
Z-Axis Movement		Automatic
Focus Lens		Standard 2.0", optional 1.5", 2.5", & 4.0" available
Resolution (DPI)		Available 125, 250, 300, 380, 500, 600, 760, 1000
Computer Interface		Standard printer port and USB port
Compatible Operating Systems		MS Windows
Memory Buffer		32MB standard
Display Panel		4-line LCD display showing current file name, total working time, laser power, engraving speed, file(s) loaded in memory buffer, setup and diagnostic menus
Safety		Class 3R with red dot pointer
Electrical		100-240 Volt AC Auto Switching for 30W and below; 200-240 Volt AC Auto Switching for 40W and above models
Power Consumption		2000 - 4400W
Air Extraction System		External exhaust system required, one 4" connection on the back of the machine.

\*Speed does not equal to throughput. See dealer or visit [www.laserproi.com](http://www.laserproi.com) for more details.

## Optional Items



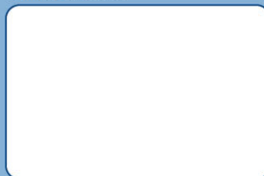
SmartMEMORY™ Rotary Attachment Honeycomb Table



Cutting Box Accessory Air Compressor Air Extraction System G-Cut Professional Software



Authorized Dealer



[www.GCCworld.com](http://www.GCCworld.com)

**GCC**  
LaserPro



- ▶ 38" x 24" (960 x 610 mm) extra large working area
- ▶ QSM (Quality Speed Mode) maintains 100% engraving quality while operating at maximum speed
- ▶ Patented SmartACT™ motion control technology increases your productivity by reducing ramping process and job running time
- ▶ Drag and Engrave feature assures remarkably easy and fast set-ups
- ▶ High speed DC servo motor for precise and rapid movement of laser carriage
- ▶ Linear guide for exceptional precision under high speed
- ▶ Pass-through front and rear doors to accommodate long working pieces
- ▶ LaserPro DirectPrint MAC AI Plug-In available for use with MAC OS
- ▶ Truelmage (patent pending) feature assures homogeneous engraving output

**GCC**

GCC Headquarters 4F, No.236, Fude 2nd Rd., Xzhi Dist., New Taipei City 22151, Taiwan 886-2-6616-6692 Fax: 886-2-2694-6875  
 GCC China No.1, Chen Feng Road, Yushan, Kunshan, Jiangsu 215300, China 86-512-5726-1515 Fax: 86-512-5726-1518  
 GCC Europe B.V. Eglantierbaan 43-45, 2908 LV, Capelle a/d IJssel, The Netherlands 31-10-458-9367 Fax: 31-10-451-9874  
 GCC America, Inc 323 Paseo Tesoro, Walnut, CA 91789, USA 1-909-718-0248 Fax: 1-909-718-0251  
 US & Canada Only Toll Free: 1-888-284-5211

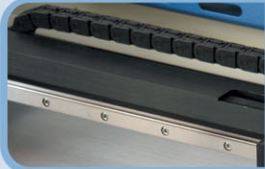
Laser Engraver

LaserPro's award winning product gets bigger and faster. The Spirit series has received worldwide accolades from the signs and awards industry since its introduction. Now welcome the top of the line, Spirit GX, to the family. The Spirit GX is equipped with sensible upgrades to further boost overall usability.

**Performance Features**



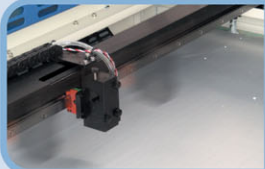
**QSM**  
Quality Speed Mode technology redefines the correlation between speed and quality allows generation of marvelous engraving quality while racing at high speeds.



**High Precision Linear Guide**  
Accurate linear motion system made of a sturdy and high quality stainless steel structure that ensures spectacular precision.



**Pass-through Front & Rear Doors**  
Convenient front and rear door design enables loading of extremely long working pieces.



**SmartACT™ (Patented)**  
Ground breaking technology that reduces the ramping process and job running time helping you to boost productivity.



**G-Cut Professional Software (Optional)**  
G-Cut is a professional cutting software that offers a collection of special vector functions and enhances the output quality for vector cutting applications.



**Extra Large Working Area**  
Extra large working area extendable to 38" x 24" (965 x 610 mm). The spacious platform allows jobs that require large working space.

**LaserPro Spirit GX**

**User Friendly Features**

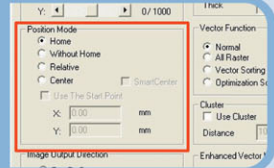
**Drag and Engrave**

An extremely user-friendly operation based on servomotor technology and sensible innovative ideas. Simply drag the pen carriage to the desired position and press start to commence the engraving.



**Programmable Origin**

Easy-to-use position modes allow the operator an effortless way to setup a job. Repetitive workflows can be drastically simplified by relocating the origin position to any desired location.



**SmartPIN™ Auto Focus**

The plug-and-play probe design makes focusing a one-touch process and provides the accuracy and precision required for optimum quality in the lasering process.



**SmartLID™**

Innovative design allows easy access to internal machine parts for daily maintenance.



**Applications**



Anodized Metal



Signage



Stone / Tile



Acrylic



3D-Engraving



Textile / Apparel